



# PRODUCT CATALOGUE

**"YOUR PARTNER IN HYGIENE SOLUTIONS"**



# WE OFFER

**FEMININE  
HYGIENE  
SERVICES**

**OFFICE  
SANITIZATION  
SERVICES**

**HAND CARE  
SOLUTIONS**

**CUBICLE  
SOLUTIONS**

**OFFICE  
JANITORIAL  
SERVICES**

**ODOR  
CONTROL**

**“WE OFFER A DISCREET AND PROFESSIONAL  
SERVICE, ALWAYS ADAPTING TO YOUR  
BUSINESS’S REQUIREMENTS”**

# EVOGIENE HANDS FREE PEDAL SANITARY BIN

## DESCRIPTION

The Evogiene sanitary disposal bin range has been designed for ultimate ease of use, featuring a side opening flap, convenient pedal location and internal masking flaps to conceal the contents of the unit. There is no need for an automatic bin to get the same touch free benefit as a pedal bin, same great features less cost, more environmentally friendly.

**ITEM:**

**ECLIPSE PEDAL BIN**

## Features & Benefits

- Available pedal on BOTH ends of bin. Ideal for high usage. Example bars, schools, hospitals, etc.
- The smart design of the Evogiene ensures that the sanitary bin is easily located either side of the WC, below seat level. ( Low Profile design)
- All Evogiene bin units incorporate SteriTouch® antibacterial surface protection.
- All our sanitary waste bins contain EnviroSan® Active granules; a safe and effective germicide.

**AVAILABLE COLORS:**

**GREY, BLACK**

**DIMENSION:**

**18.1" X 16.7" X 7.9"**

**TYPE OF SERVICE PROVIDED:**

**TWICE PER WEEK,  
WEEKLY  
TWICE PER MONTH,  
MONTHLY**



## VOGIENE HANDS FREE PEDAL SANITARY BIN

### DESCRIPTION

The Evogiene sanitary disposal bin range has been designed for ultimate ease of use, featuring a side opening flap, convenient pedal location and internal masking flaps to conceal the contents of the unit. **There is no need for an automatic bin to get the same touch free benefit as a pedal bin, same great features less cost, more environmentally friendly.**

- ✓ **HANDS FREE DESIGN**
- ✓ **PEDAL ON EACH SIDE**
- ✓ **DISCREET**
- ✓ **ENVIRONMENTALLY FRIENDLY**
- ✓ **COST EFFECTIVE**
- ✓ **REDUCES THE RISK OF INFECTION**
- ✓ **NO BATTERY NEEDED**



## VOGIENE AUTOMATIC SANITARY BIN

### DESCRIPTION

The Evogiene sanitary disposal bin range has been designed for ultimate ease of use, sensor on surface lid and internal masking flaps to conceal the contents of the unit.

- ✓ **NO-TOUCH AUTOMATIC OPERATION**
- ✓ **BATTERY OPERATED**
- ✓ **QUIET OPERATION**
- ✓ **ENVIRONMENTALLY FRIENDLY**
- ✓ **COST EFFECTIVE**
- ✓ **DISCREET**
- ✓ **REDUCES THE RISK OF INFECTION**



# EVOGIENE AUTOMATIC SANITARY BIN

## DESCRIPTION

The **ECLIPSE DISCREET AUTO** offers customers a hygienic, modern and innovative way of disposing of hygiene waste. The no-touch operation minimizes the risk of cross-contamination, as users simply wave their hand across the lid for it to open.

## Features & Benefits

- Visible “Automatic” motion sensor on surface lid. Effectively detecting ANY type of motion. No need for touch.
- LED (light) indicator: \*LED light flashes -detecting motion.\*LED light flashes – for battery change.
- All Evogiene sanitary bin units incorporate SteriTouch® antibacterial surface protection, to protect against cross-infection.
- Privacy tray for easier posting of sanitary waste



**CAPACITY**

**11.3 LITRES**

**AVAILABLE COLORS:**

**BLACK**

**DIMENSION:**

**44CM X 40CM X 14.8CM**

**TYPE OF SERVICE PROVIDED:**

**TWICE PER WEEK,  
WEEKLY  
TWICE PER MONTH,**

# EVOGIENE AUTOMATIC SANITARY BIN 23 L

## DESCRIPTION

The Evogiene Automatic Bin was developed in response to market demand for an aesthetically pleasing, robust and serviceable feminine hygiene unit. The no-touch operation minimizes the risk of cross-contamination, as users simply wave their hand across the lid for it to open.

**CAPACITY**

**23 LITERS**

**AVAILABLE  
COLORS:**

**WHITE**

**TYPE OF SERVICE  
PROVIDED:**

**TWICE PER WEEK,  
WEEKLY  
TWICE PER MONTH,**

## Features & Benefits

- **Designed throughout to minimize dirt traps**
- **Electronic no-touch models for hands-free operation**
- **Snap in/out protective flap inset**
- **Sleek, modern and compact design with minimal floor obstruction**



# EVOGIENE MAXI SANITARY BIN

## DESCRIPTION

The Evogiene Maxi sanitary disposal bin range has been designed for ultimate ease of use, sensor on surface lid, convenient pedal location and internal masking flaps to conceal the contents of the unit.

## Features & Benefits

<b>ITEM:</b>	<b>ECLIPSE AUTOMATIC BIN</b>
<b>AVAILABLE COLORS:</b>	<b>GREY</b>
<b>DIMENSION:</b>	<b>14.5" X 28" X 24"</b>
<b>TYPE OF SERVICE PROVIDED:</b>	<b>TWICE PER WEEK, WEEKLY TWICE PER MONTH, MONTHLY</b>

- PHS SteriTouch antibacterial surface will NOT wear off over time or usage.
- PHS sanitary bins (exclusively provided by L.S.A) are the ONLY bins currently available in Trinidad & Tobago with a permanent antibacterial surface.
- Biodegradable bags customized to line bin with no unsightly overlapping.
- This Evogiene Maxi Bin is outfitted with Trolley Handles at the back and rear wheels for convenience.



# HELP YOURSELF VEND PRE-ORDER ONLY

## DESCRIPTION

Providing an easy way to offer free period products in your premises. Designed for use in any environment, from local schools to corporate offices. This unit is suitable for distributing most period products Including Tampons, Sanitary Pads, Menstrual Cups, and Reusable Pads/Underwear.

<b>ITEM:</b>	<b>HELP YOURSELF VEND</b>
<b>AVAILABLE COLORS:</b>	<b>GREY</b>
<b>DIMENSION:</b>	<b>51.93 MM X 144 MM</b>
<b>TYPE OF SERVICE PROVIDED:</b>	<b>TWICE PER WEEK, WEEKLY TWICE PER MONTH, MONTHLY</b>

## Features & Benefits

- Help tackle period poverty by offering free products.
- A compact unit to fit any size washroom.





# INCONTINENCE BINS

## DESCRIPTION

The incontinence bin from phs offers discreet and hygienic disposal solution for incontinence sanitary waste. It has been designed with an option to add an Incontinence Bag Dispenser into your washroom to assist with the hygienic transfer of hygiene products into the bins.

<b>ITEM:</b>	<b>MALE INCONTINENCE BIN</b>
<b>AVAILABLE COLORS:</b>	<b>MINERAL GREEN &amp; GREY</b>
<b>DIMENSION:</b>	<b>46CM X 42.5CM X 20CM</b>
<b>TYPE OF SERVICE PROVIDED:</b>	<b>TWICE PER WEEK, WEEKLY TWICE PER MONTH, MONTHLY</b>

## Features & Benefits

- **No- touch operation to prevent the spread of germs.**
- **Cleaned with an enzyme-based cleaner to combat 99.99% of bacteria.**
- **Wider opening and chute for easier disposal**



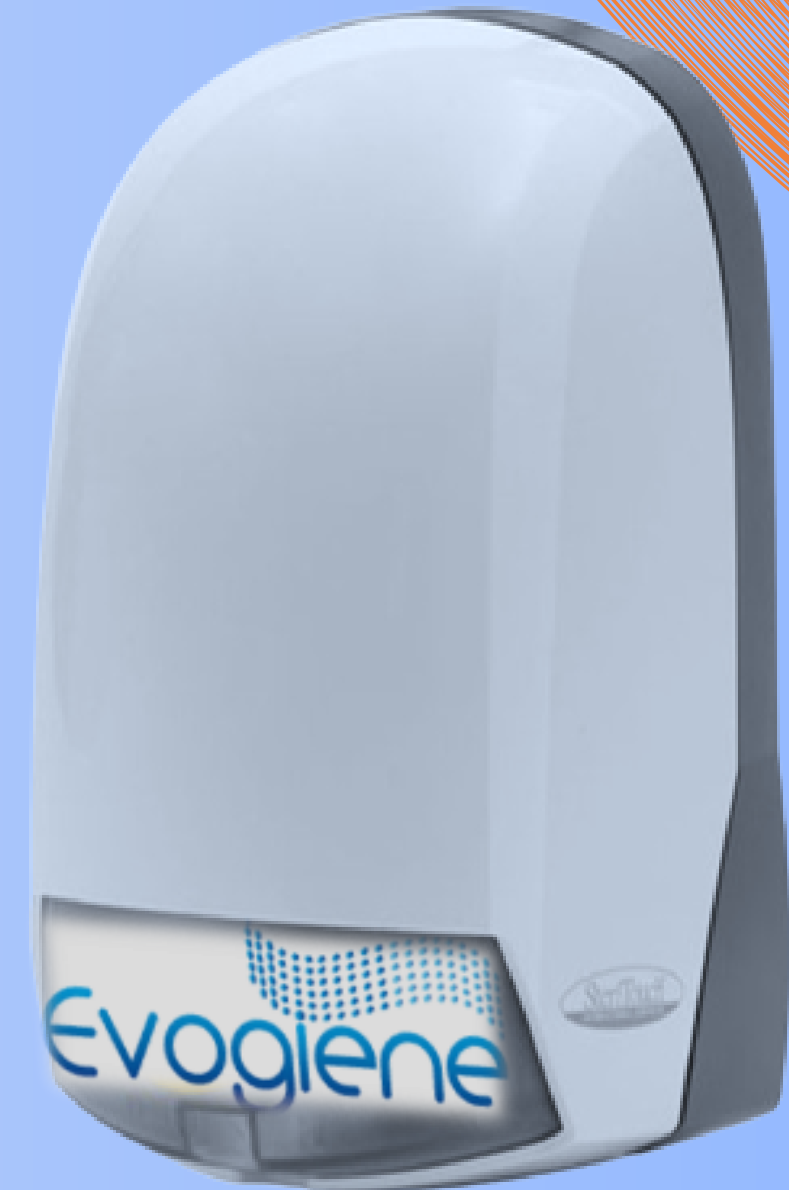
# EVOGIENE SOAP DISPENSER

## DESCRIPTION

Our stylish soap dispenser encourages good hand hygiene and protection against cross-infection with integral steri-touch antibacterial surface protection.

## Features & Benefits

- Made with ABS plastic technology, which is crack proof. ABS plastic is strong and durable and offers good resistance to heat and chemicals.
- Made with PHS' patented Steri-Touch technology to provide permanent antibacterial surface protection. The added assurance of no cross-contamination
- Refills available in antibacterial soap – killing 99.9% germs on contact or luxury hand soap. Luxury hand soap (creamier & thicker) mainly used for executive restroom areas, etc.



<b>ITEM:</b>	<b>PHS SOAP DISPENSER</b>
<b>AVAILABLE COLORS:</b>	<b>WHITE</b>
<b>DIMENSION:</b>	<b>8" X 5" X 4"</b>
<b>TYPE OF SERVICE PROVIDED:</b>	<b>TWICE PER WEEK, WEEKLY TWICE PER MONTH, MONTHLY</b>

# EVOGIENE FOAMING SOAP DISPENSER

## DESCRIPTION

The Foam Soap Dispenser it's an economical and sustainable choice for end-users. It works with foam hand washes and sanitizers to produce the right amount of foam for each application.

## Features & Benefits

<b>ITEM:</b>	<b>FOAMING SOAP DISPENSER</b>
<b>AVAILABLE COLORS:</b>	<b>BLACK &amp; WHITE</b>
<b>DIMENSION:</b>	<b>9" X 4" X 4"</b>
<b>TYPE OF SERVICE PROVIDED:</b>	<b>TWICE PER WEEK, WEEKLY TWICE PER MONTH, MONTHLY</b>

- Foam soap gives a higher yield in usage compared to bar and liquid soap.
- No unsightly spillage of liquid soap
- Approximately 1700 pumps per refill bottle
- Peace of mind to the user using a complete sanitized product.
- Dispensing cabinet features a tamper proof lock and a 1000 ml



# EVOGIENE FOAMING SANITIZER DISPENSER

## DESCRIPTION

The Foam Soap Dispenser it's an economical and sustainable choice for end-users. It works with foam hand washes and sanitizers to produce the right amount of foam for each application.

## Features & Benefits

<b>ITEM:</b>	<b>FOAMING SANITIZER DISPENSER</b>
<b>AVAILABLE COLORS:</b>	<b>WHITE</b>
<b>DIMENSION:</b>	<b>6" X 4" X 4"</b>
<b>TYPE OF SERVICE PROVIDED:</b>	<b>TWICE PER WEEK, WEEKLY TWICE PER MONTH, MONTHLY</b>

- Foam hand sanitizer gives a higher yield in usage.
- No unsightly spillage of liquid sanitizer
- Approximately 1700 pumps per refill bottle
- Peace of mind to the user using a complete sanitized product.
- Dispensing cabinet features a tamper proof lock and a 1000 ml



# VOGLIENE SURFACE SANITIZER DISPENSER

## DESCRIPTION

Proven to safely and effectively clean toilet seats, washroom surfaces. Also suitable to use on Baby Changing Tables.

## Features & Benefits

<b>ITEM:</b>	<b>SURFACE SANITIZER DISPENSER</b>
<b>AVAILABLE COLORS:</b>	<b>WHITE</b>
<b>DIMENSION:</b>	<b>6" X 4.2" X 3.5"</b>
<b>TYPE OF SERVICE PROVIDED:</b>	<b>TWICE PER MONTH &amp; MONTHLY</b>

- Made with PHS patented technology to provide permanent antibacterial surface protection.
- The added assurance of no cross-contamination.
- Built-in sanitizer reservoir dispenses in spray form.
- Sanitizer reservoir contains: PHS “Surface Sani II Fluid” special formula.
- Non-irritant, odor neutralizing, fluid



# VOGIENE TOILET/URINAL DRIPPING SYSTEM

## DESCRIPTION

Offers an automatic concentrated drip application as a vacuum is created with every drip via wick & fluid. No need for batteries.



## Features & Benefits

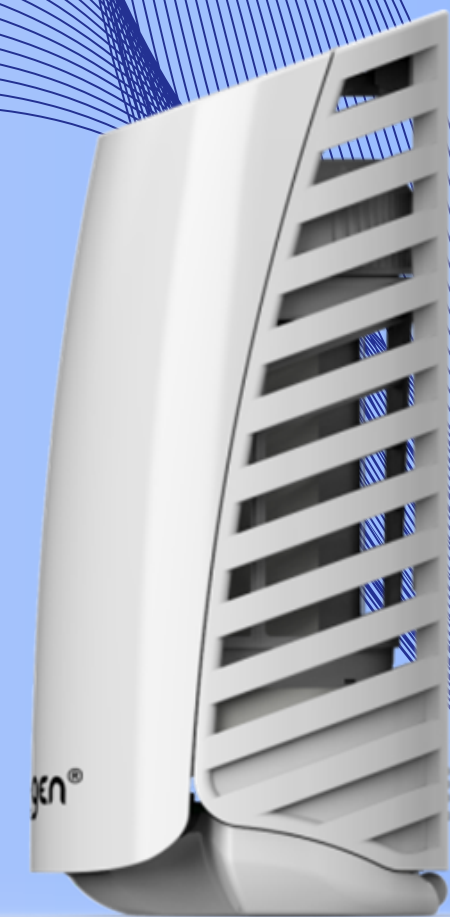
- Using exclusive highly concentrated “Odor Counteractant”.
- The added assurance of no cross-contamination.
- Combating & neutralizing all offensive odors
- Odor counteractant fluid also maintains bacteria balance in septic tanks.
- Key provided to open & close dispenser.

<b>ITEM:</b>	<b>TOILET/URINAL DRIPPING SYSTEM</b>
<b>AVAILABLE COLORS:</b>	<b>WHITE</b>
<b>DIMENSION:</b>	<b>11.5" X 4.25" X 3"</b>
<b>TYPE OF SERVICE PROVIDED:</b>	<b>MONTHLY</b>

# OXY-GEN DISPENSER

## DESCRIPTION

Oxy-Gen Powered technology is a clean source of power, producing continuous levels of intense fragrance that contain no propellants, solvents or CFCs- just natural scent.



## Features & Benefits

- Deliver consistent and continuous levels of fragrance and odor control for the full life of each refill- 60 Days.
- The oxy-gen dispenser uses neutrolox, a proprietary odor neutralizing agent to eliminate, not mask, any bad odors.
- Visual light indicators: provide refills and battery replacement reminders.
- Works against gravity so the fragrance oil won't pool or leak.

<b>ITEM:</b>	<b>OXY-GEN DISPENSER</b>
<b>AVAILABLE COLORS:</b>	<b>WHITE</b>
<b>DIMENSION:</b>	<b>3" X 3" X 5.5"</b>
<b>TYPE OF SERVICE PROVIDED:</b>	<b>EVERY TWO MONTHS</b>

# EVOGIENE METERED AIR FRESHENER DISPENSER

## DESCRIPTION

Ensures that areas are always odor free and completely eliminate unpleasant odors. If room is larger in size, recommend more dispensers.

## Features & Benefits

- Contains no C.F.C's (chlorofluorocarbon) - environmentally friendly.
- Air freshener sprays approximately 3,000 metered sprays.
- Sprays go off at timed intervals which can be set accordingly.
- Depending on spray times set – can yield 3 to 6 months use.



<b>ITEM:</b>	METERED AIR FRESHENER DISPENSER
<b>AVAILABLE COLORS:</b>	WHITE
<b>DIMENSION:</b>	9" X 3" X 3"
<b>TYPE OF SERVICE PROVIDED:</b>	QUARTERLY



# EVOGIENE TOILET SEAT COVERS

## DESCRIPTION

The TSC dispenser provides disposable **FLUSHABLE** covers that protects you from germs in public restrooms



## Features & Benefits

- Covers can be flushed and are 100% biodegradable. Thus, being environmentally friendly.
- Disposable covers come with center flaps and slit designs for complete coverage.
- The added assurance of no cross-contamination. Peace of mind to the user using a complete sanitized product.
- Can hold up to 500 disposable covers – (2) pks. of 250.
- Shiny side should be facing the seat as this side contains wax germicide.

<b>ITEM:</b>	<b>TOILET SEAT COVERS</b>
<b>AVAILABLE COLORS:</b>	<b>WHITE</b>
<b>DIMENSION:</b>	<b>15.5" X 11" X 3"</b>
<b>TYPE OF SERVICE PROVIDED:</b>	<b>MONTHLY</b>

# SANIPURE SOAP/HAND SANITIZER DISPENSER

## DESCRIPTION

The Soap Dispenser it's an economical and sustainable choice for end-users.

<b>ITEM:</b>	<b>HAND SANITIZER DISPENSER</b>
<b>AVAILABLE COLORS:</b>	<b>WHITE</b>
<b>DIMENSION:</b>	<b>11" X 4.5" X 5"</b>
<b>AVAIABLE REFILL</b>	<b>1000 ML</b>

## Features & Benefits

- **Kills 99% of germs without water.**
- **Made with very durable plastic. Approximate pumps per 1,200ml refill = 1,333**
- **Each hand push / pump reinforces the mounting of unit.**
- **Anti-locking device: Securing special contents.**
- **Service done on a Monthly, Twice Per Month Basis**



# SHARPSAFE® 13 LITRE

## DESCRIPTION

Sharpsafe® containers are specifically designed to enable the safe disposal of clinical sharps and minimize the risk of needlestick injuries. The 13L container is designed for high volume areas such as A&E, wards, and phlebotomy clinics. The wide horizontal aperture allows for the safe disposal of larger sharps equipment and surgical instruments.

<b>ITEM:</b>	SHARPSAFE® 13 LITRE
<b>AVAILABLE COLORS:</b>	GREY & YELLOW
<b>DIMENSION:</b>	582 X 385 X 580 MM
<b>TYPE OF SERVICE PROVIDED:</b>	TWICE PER WEEK, WEEKLY TWICE PER MONTH, MONTHLY

## Features & Benefits

- Made from low carbon footprint, recycled material
- Semi-translucent lid available in different colours
- Closure shield for temporary and final closure feature
- Simple 4 click assembly
- Large aperture for horizontal fill
- Carry handle; Latex free
- In-mould label - offers permanent audit trail which cannot be removed
- Class-leading leak resistance



# SHARPSAFE® 7 LITRE

## DESCRIPTION

Sharpsafe containers are specifically designed to enable the safe disposal of clinical sharps and minimize the risk of associated injuries. The 7L is designed for low to medium use areas and ideal for acute and community settings.

<b>ITEM:</b>	<b>SHARPSAFE® 13 LITRE</b>
<b>AVAILABLE COLORS:</b>	<b>GREY &amp; YELLOW</b>
<b>DIMENSION:</b>	<b>345 X 870 X 680 MM</b>
<b>TYPE OF SERVICE PROVIDED:</b>	<b>TWICE PER WEEK, WEEKLY TWICE PER MONTH, MONTHLY</b>

## Features & Benefits

- Made from low carbon footprint, recycled material
- Semi-translucent lid available in different colours
- Closure shield for temporary and final closure feature
- Simple 4 click assembly
- Large aperture for horizontal fill
- Carry handle; Latex free
- In-mould label - offers permanent audit trail which cannot be removed
- Class-leading leak resistance



# URINAL BLOCK

## DESCRIPTION

The ECOSHIELD™ significantly improves hygiene in male washrooms for staff and customers. Using a two-in-one fragrance and bio-block, the ECOSHIELD™ breaks down uric salt and limescale. The ECOSHIELD™ helps reduce blockages and keeps urinal traps and pipe work clear, enhancing the washroom appearance and improving its environment for staff, visitors and customers.

## Features & Benefits

- Breaks down limescale build-up.
- Reduces blockages and keeps urinal traps and pipe work clear.
- Environmentally friendly.
- Can save up to 96% of water
- Strong and durable ABS plastic construction.
- Subtle red berry fragrance.
- Connects to the urinal trap allowing it to be installed in all standard urinals and troughs.

ITEM:

URINAL BLOCK

AVAILABLE  
COLORS:

WHITE



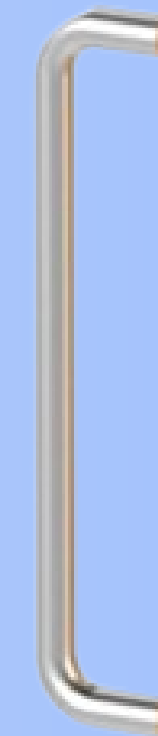
# STERIHANDLES PRE-ORDER ONLY

## DESCRIPTION

**SteriHandles reduces the risk of cross-contamination through interior door handles, killing 99.99% of bacteria in less than one second. The touchable components of these handles are coated with Nitropep© anti-microbial treatment, in collaboration with Rubig-N+ technology ©**

## Features & Benefits

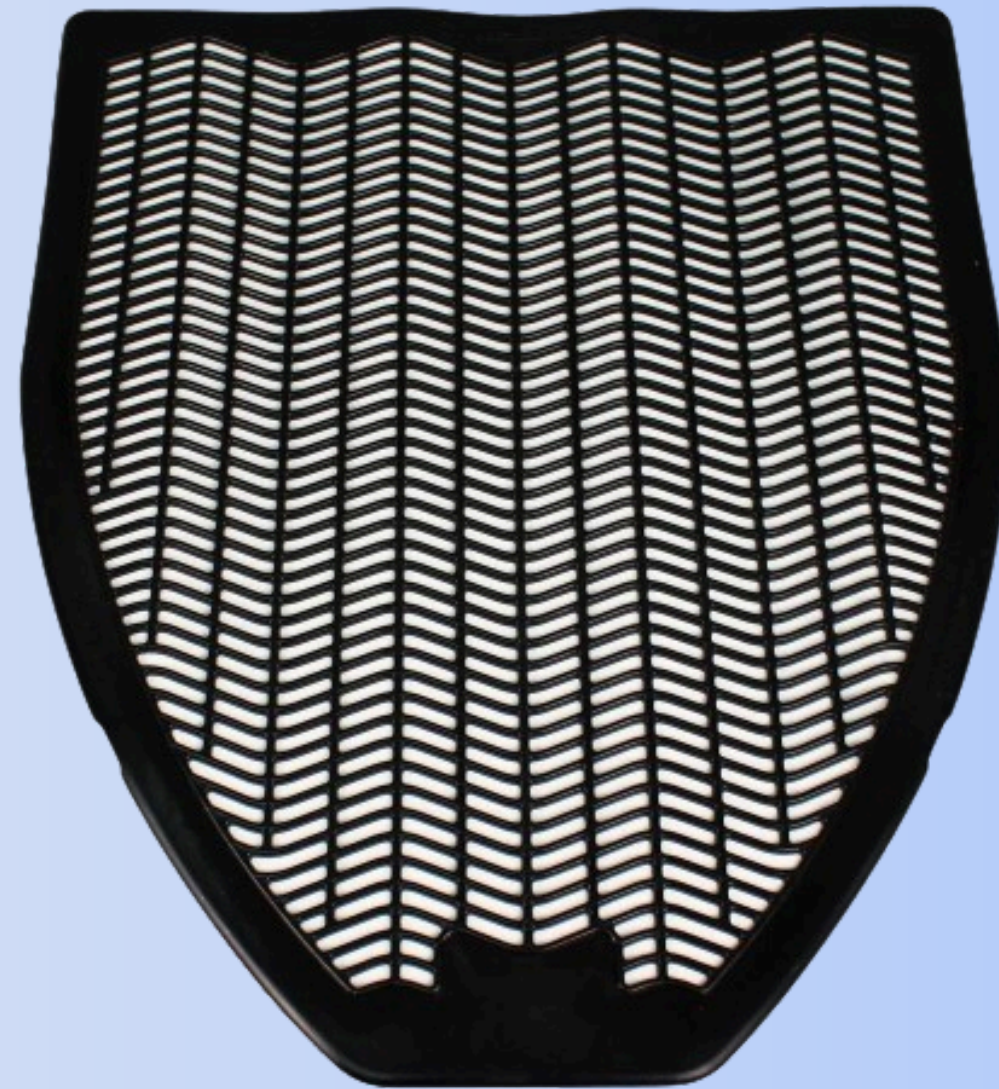
- **Reduces the risk of spreadable viruses with a higher than 99.99% bacterial kill rate, killing germs in seconds.**
- **Will complement existing hand hygiene measures, improving hygiene and safety for employees, customers, and visitors.**
- **Can be easily fitted to any door, making it ideal for use in all interior environments including Retail, Education, Medical, and Care Facilities.**
- **Made from durable stainless steel, ensuring the handles are tamper-resistant.**



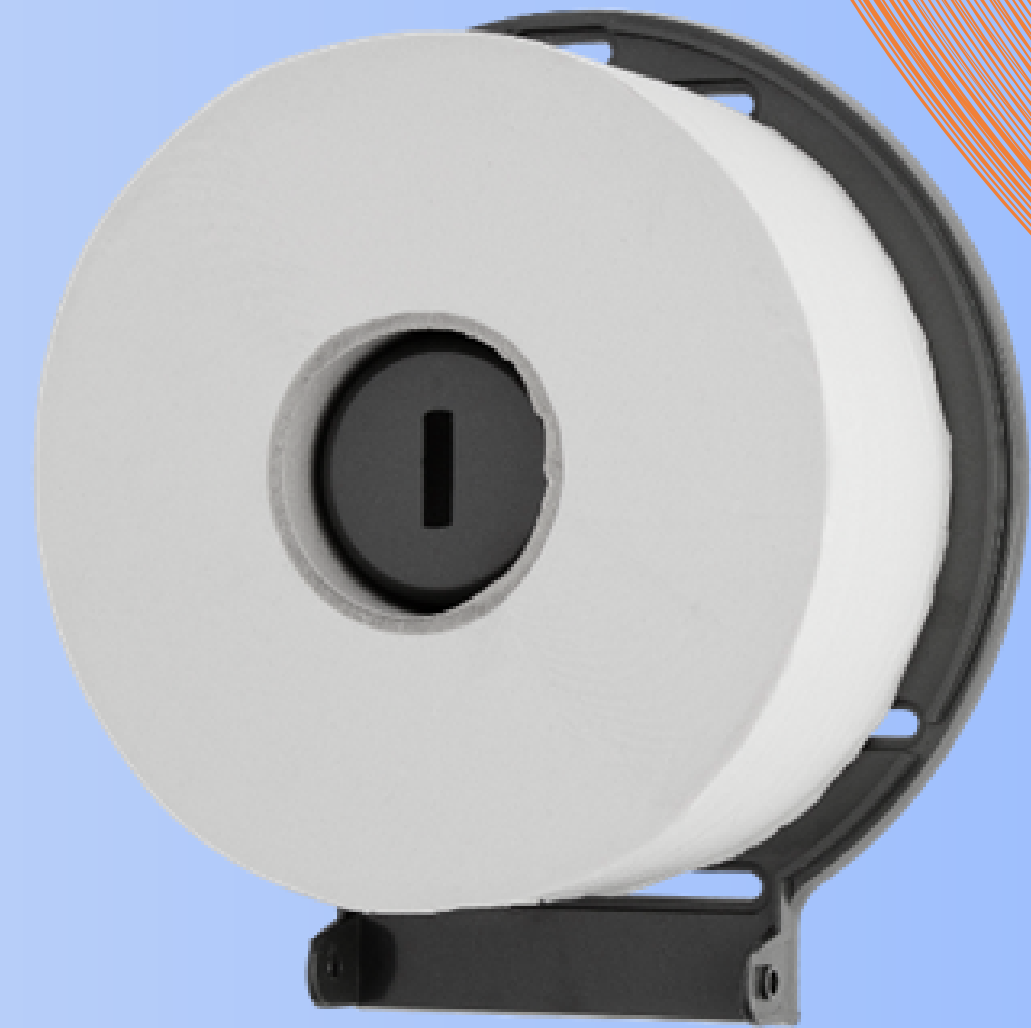
# URINAL MATS

## DESCRIPTION

**URINAL MATS: SCREENT  
DISPOSAL FLOOR MATS FITS  
UNDER URINALS OR WALL  
MOUNTED COMMUNES**



# JUMBO TOILET PAPER





# DIGNITY POUCH





**“YOUR PARTNER IN HYGIENE SOLUTIONS”**



**LOT 3, PANCHOO LANE 3, BOUNDARY ROAD, SAN JUAN**



**WWW.LSAHEALTHCARE.COM**



**389-8153/675-3466**